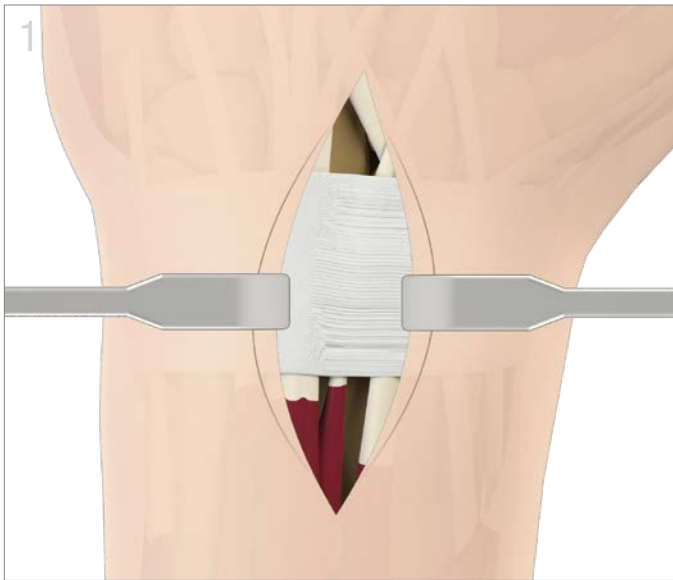


# Dorsal Buttress Pin™

•• Wrist Fixation System 3





### Exposure (limited dorsal approach)

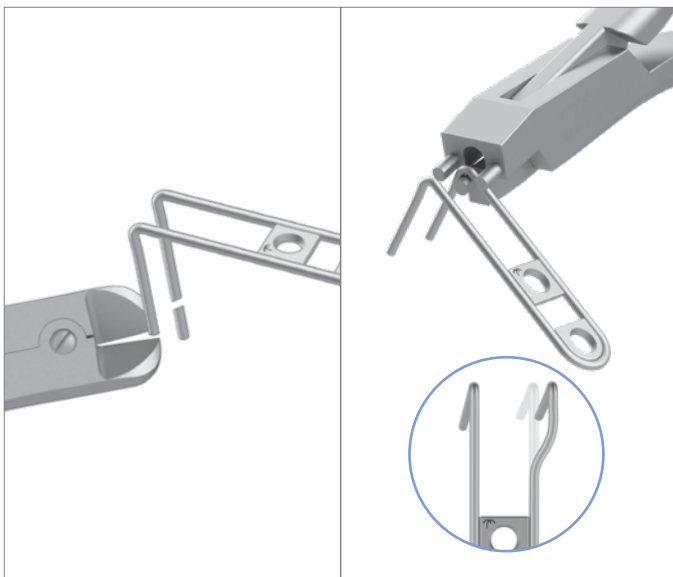
- Make incision over 4th dorsal compartment tendons.
- Develop interval between 3-4, and 4-5 extensor compartments.
- Transpose EPL if needed.
- Expose the dorsal cortex of the distal radius.



### Implant Positioning

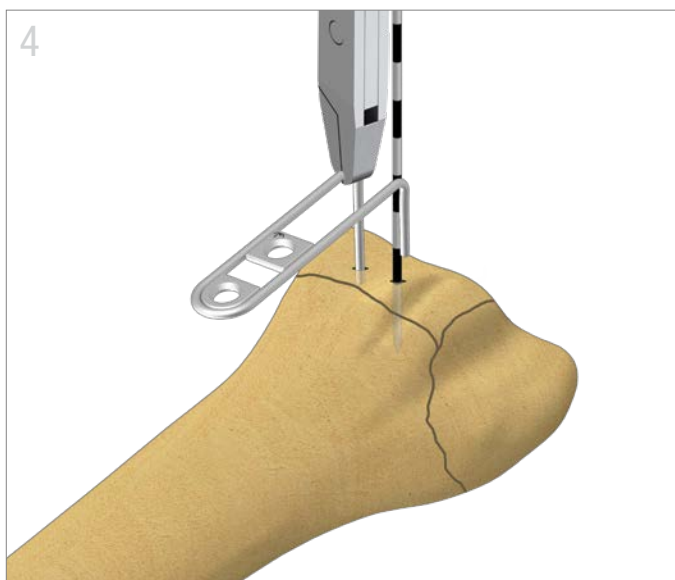
- Insert two parallel 1.1mm (0.045") K-wires at the location of desired distal fixation.
- The direction and angle of the K-wires will determine the direction and angle of the Dorsal Buttress Pin™ legs.
- Confirm position on 10 deg. lateral X-ray.

**Note:** The position of the Dorsal Buttress Pin proximally may affect the degree of pronation and supination needed for the K-wire orientation.



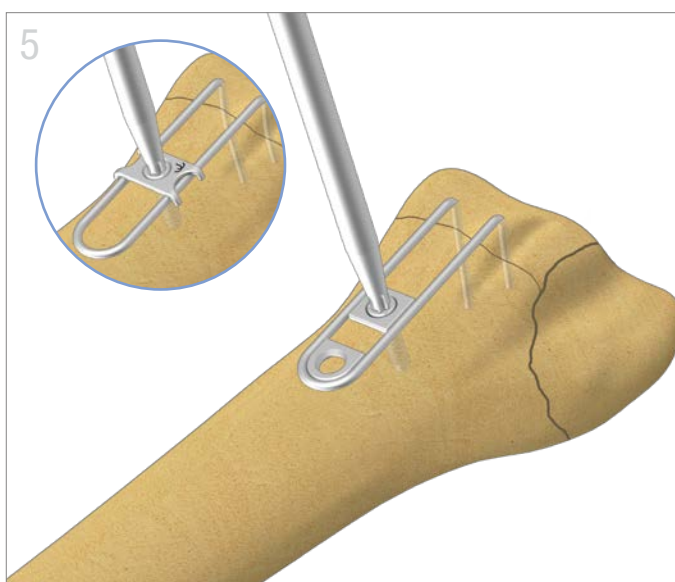
### Implant Preparation

- Cut the legs of the Dorsal Buttress Pin to the desired length, leaving one leg approximately 3mm longer than the other.
- The leg trajectory as well as the separation between the legs can be modified as needed using the Wire Bender.



### Buttress Pin Insertion

- At the apex of the bend, apply a Pin Clamp aligned to the long leg.
- Position the tip of the longest leg adjacent to the entry site in the bone of the respective K-wire.
- As the K-wire is removed, immediately engage the hole with the tip of the leg.
- Carefully switch the Pin Clamp to the shorter leg and repeat.
- Complete seating of each leg into the bone using the impactor.



### Proximal Fixation

- Align the proximal portion of the Volar Buttress Pin to the shaft.
- Use the 1.8 mm (blue) drill with GUIDE-1.8/2.4 to drill a hole for the 2.4mm cortical bone screw either through the attached implant washer or in the desired position for a free washer.
- Measure and insert the appropriate 2.4 mm cortical bone screw. If a free washer is used, pre-mount the washer on the screw prior to insertion.



### Final Fixation

- Insert an additional fixation through a second attached implant washer or with a free washer. Typically, this supplemental fixation is applied after all other fragments are secured.

All components are **Wrist Fixation System 3 (WS3)** items. All implants made from surgical grade stainless steel.



Cortical Screw,  
2.4mm

Screw Table

	TRX2.4-XX
Length	10-32mm *
Drill	1.8mm
Guide	GUIDE-1.8/2.4
Driver	Torx 8

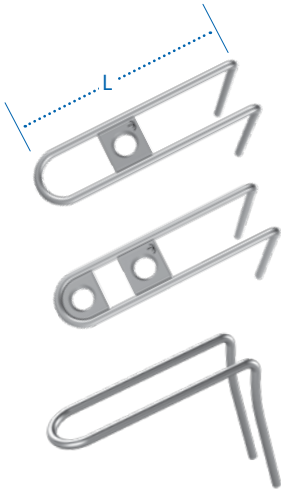
\* 2mm increments

Dorsal Buttress Pin™

- DBP27-1 27mm
- DBP27-2 27mm
- DBP32-1 32mm
- DBP32-2 32mm

- DBP27 27mm
- DBP32 32mm

L = length



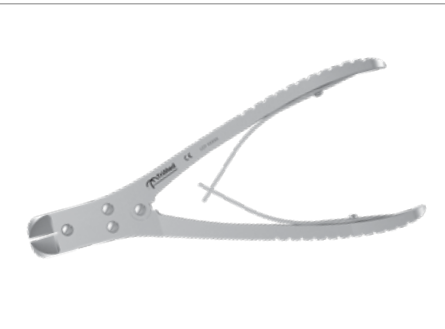
Wire Bender

BNDWIR-1.1



Wire Cutter

WIRECUTR



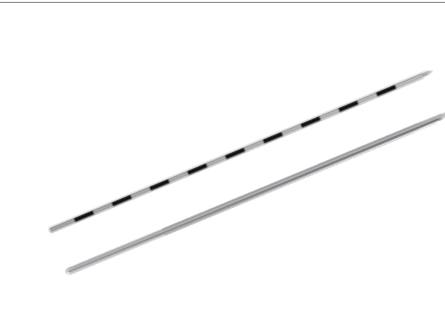
Washer

WASHR-2.4 1 Hole



K-Wire

- WIRE-1.1/100
- WIRE-1.6/100



TriMed, Inc. / 27533 Avenue Hopkins / Santa Clarita, CA 91355 USA / 800-633-7221 / [www.trimedortho.com](http://www.trimedortho.com)

The technique presented is one suggested surgical technique. The decision to use a specific implant and the surgical technique must be based on sound medical judgment by the surgeon that takes into consideration factors such as the circumstances and configuration of the injury.

This document is controlled by TriMed, Inc. When downloaded, printed, and/or copied, this document becomes uncontrolled, and users should always check [trimedortho.com](http://trimedortho.com) for the latest version.

For indications, contraindications, warnings and precautions related to TriMed Wrist Fixation System reference IFU on [trimedortho.com/ifu](http://trimedortho.com/ifu).

See [trimedortho.com/patents](http://trimedortho.com/patents) for all patent information.