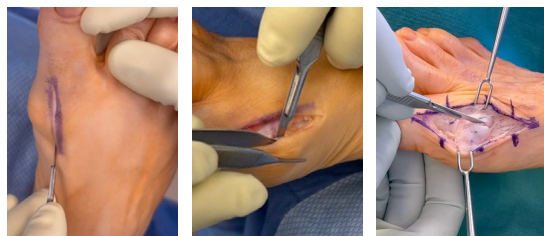


Triplanar 1st MTP Fusion with the SpeedMTP™ Implant

Key Technique Steps & Fluoro Checks

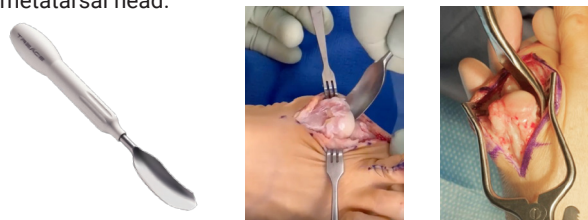
1. Incision and Dissection

Perform a dorsal longitudinal incision medial to the extensor hallucis longus (EHL) tendon to visualize the 1st metarsophalangeal (MTP) joint. Create a full-thickness, subperiosteal tissue envelope.



2. Joint Release

Utilize the GreatRelease™ MTP joint release instrument, McGlamry elevator, or preferred method to thoroughly release the plantar, medial, and lateral soft tissues around the 1st metatarsal head.



Note: Resect any dorsomedial or dorsolateral eminence and the base of the proximal phalanx as needed.

3. Joint Prep

Prep the 1st MTP joint using cup and cone reamers or preferred method.

Use the 1.6mm fluted drill bit to fenestrate both joint surfaces.



Note: Autograft or allograft may be utilized as needed.

4. Provisional Fixation

Manually de-rotate the hallux into proper alignment in the frontal, sagittal and transverse planes. Axially compress the joint and apply desired provisional fixation wires.

Note: An axial K-wire is recommended first for full mobility in setting and maintaining triplanar alignment.

Confirm alignment clinically and radiographically.

Utilize a flat plate to clinically assess sagittal plane alignment, confirming the IPJ is just off the weightbearing surface (or in the desired position).



5. SpeedMTP™ Drill Guide Placement

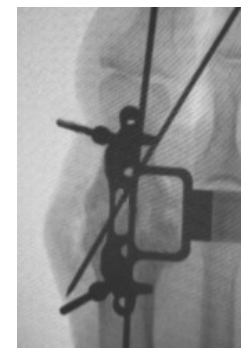
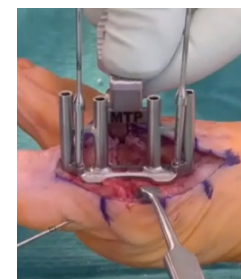
Center the Drill Guide dorsally over the joint surface ensuring the underside of the Drill Guide is in full contact with bone. Contour the bone surface as needed to properly seat the Drill Guide, using the FeatherRasp™ or preferred method.



Insert the threaded tacks to secure the Drill Guide in place.

Radiographically confirm the implant position is centered over the joint line and confirm no interference with the provisional fixation wires or other implants.

Note: The FastPitch® screws will be on the same side as the tack holes in the Drill Guide. The implant can be placed with the FastPitch® screws medial or lateral.



Triplanar 1st MTP Fusion with the SpeedMTP™ Implant

Key Technique Steps & Fluoro Checks

6. Targeting Guide for Optional Interfrag Screw Insertion*

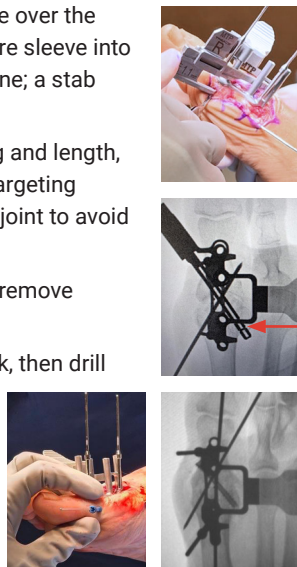
Select the appropriate Targeting Guide and place over the two distal lobes of the Drill Guide. Slide the K-wire sleeve into the Targeting Guide until fully in contact with bone; a stab incision may be made, if necessary.

Utilize fluoroscopy to confirm proper positioning and length, measured using the notches at the end of the Targeting Guide. Ensure sufficient distance from the MTP joint to avoid bone fracture. Adjust where needed.

Drive K-wire to desired depth. Disassemble and remove Targeting Guide.

Use the Depth Gauge Countersink to countersink, then drill over the K-wire using the 2.5mm cannulated drill bit. The depth gauge countersink may alternatively be used in place of the Targeting Guide to measure for appropriate screw length.

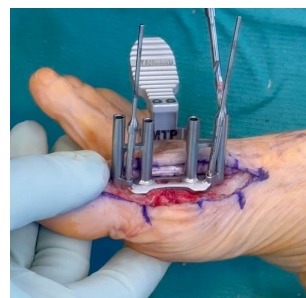
Place the appropriate screw over the wire and drive until fully seated.



7. Drilling for SpeedMTP™ Implant

Use the appropriate drill for all 4 dorsal holes through the Drill Guide.

On reverse, pull the threaded tacks and remove the Drill Guide.

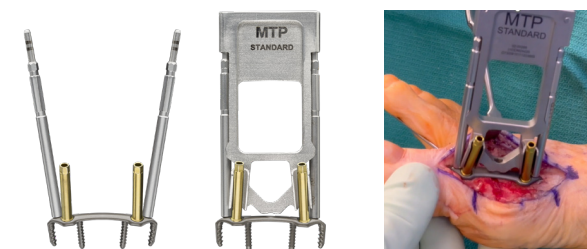


8. Energize and Insert SpeedMTP™ Implant

Energize the implant by squeezing the Threaded Rods together and place them into the Inserter Cap. Ensure the Threaded Rods are not squeezed beyond parallel.

Gently insert the implant into the pre-drilled holes by hand. When close to full insertion, the Inserter Cap may be lightly tapped with a mallet until the implant is fully seated, avoiding excessive force.

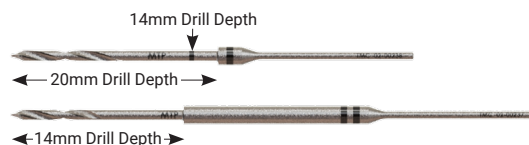
Note: Do not remove the Inserter Cap at this time.



9. FastPitch® Screw Insertion

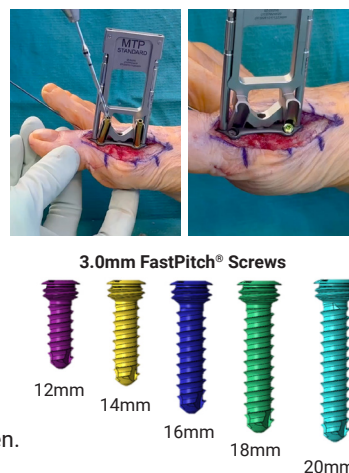
Use the appropriate drills for the distal and proximal FastPitch® screws through the gold Drill Guides.

Reference the drill for screw lengths.



Remove the gold Drill Guides and insert the appropriate FastPitch® screws into the proximal and distal holes.

Ensure the screws are fully seated and locked, taking care to not over-tighten.



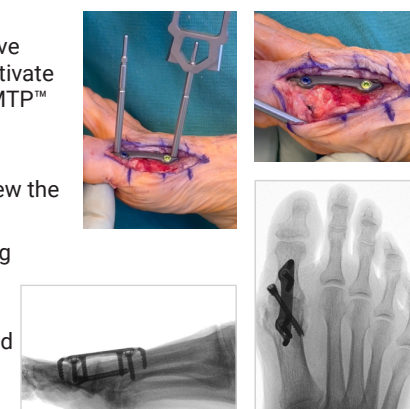
10. Activate SpeedMTP™ Implant

While squeezing the Threaded Rods, remove the Inserter Cap to activate the energized SpeedMTP™ implant.

Use the bottom of the Inserter Cap to unscrew the Threaded Rods.

Remove any remaining provisional fixation.

Confirm proper implant placement and final construct under fluoroscopy.



*At surgeon's discretion, additional screw fixation may be applied prior to placement of the SpeedMTP compression implants.

See screw labeling such as surgical technique (LBL 1405-9095) & IFU (LBL 1405-9056) on www.treace.com for complete indications, contraindications, warnings, and precautions.